

signia

Life sounds brilliant.

VoiceLink™ quick fit guide

For Audiologists and Hearing Care Professionals



signiausa.com

Hearing
Systems

SIEMENS

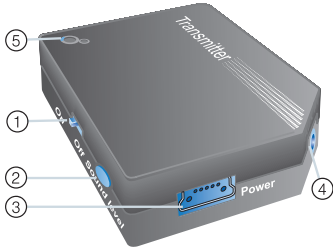
Connection setup using VoiceLink



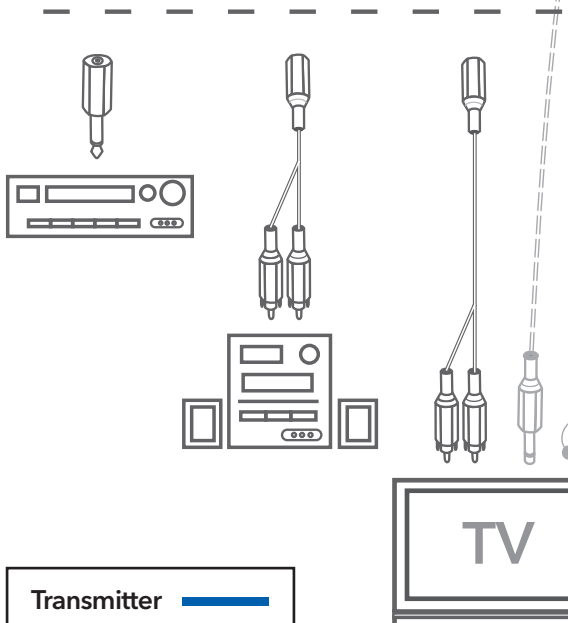
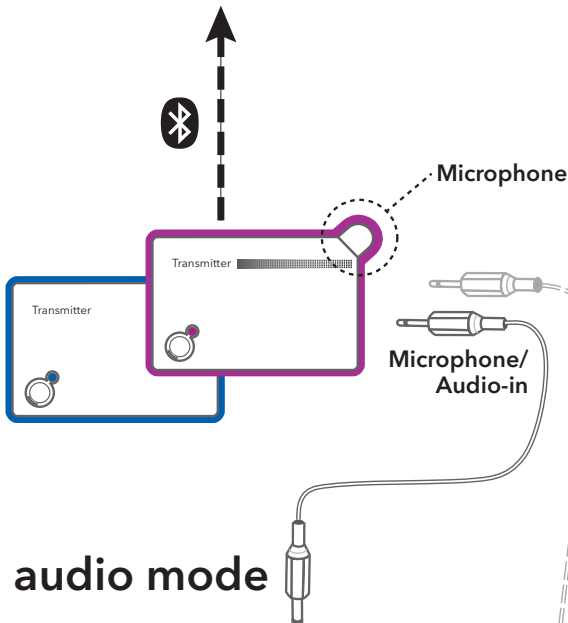
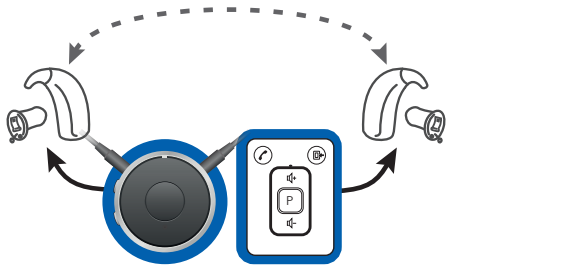
Please refer to diagram below.

To activate VoiceLink, first connect the remote lapel microphone to the Transmitter 2.5 mm "Aux in" jack, then push/hold the "Sound level" button for approximately five seconds until the flashing blue light turns to flashing purple. This will indicate that the VoiceLink microphone operation is active. Please note: it is important to plug the microphone into the Transmitter before pushing/holding the Sound level button to properly activate the remote microphone.

PLEASE NOTE - VoiceLink can be identified by the stripe to the left of the 'Transmitter' label.



1. On/off switch
2. Sound level/mode switch
3. USB-socket for power supply
4. 2.5 mm stereo socket
5. LED



Turning the VoiceLink on/off

- Use the on/off switch (1), to turn the VoiceLink on or off.

Connecting to VoiceLink

- Turn on the miniTek.
- Press the Audio Source button (ASB) on upper right, front of miniTek & wait 10 seconds.
- The LED on VoiceLink (5) & streaming device will stay constant when connection to streaming device is made; you may need to press ASB more than once if the LED continues to blink after 10 seconds.

Changing the mode

- Press the Sound Level Button (2) for about 3 seconds to change the mode.

The LED shines blue for audio mode for TVs, stereos, etc.

The LED shines purple for microphone mode for use in noisy environments.

- ▶ The selected mode remains active when you turn VoiceLink off and on.

Audio mode

- Use the on/off switch (1) to activate the Transmitter.
- Be sure that the VoiceLink is in audio mode (LED shines blue).

If the VoiceLink is in microphone mode (LED shines purple) press the Sound Level Button (2) until the LED shines blue.

In audio mode the LED (5) on the VoiceLink flashes blue while searching for a connection to your streaming device and shines blue constantly once a connection is established.

Microphone mode

- Use the on/off switch (1) to activate the VoiceLink.
- Be sure that the VoiceLink is in microphone mode (LED shines purple).

If the VoiceLink is in audio mode (LED shines blue) press the Sound Level Button until the LED shines purple.

- ▶ If you want to change to microphone mode make sure that you connect your microphone before changing the mode.

Sound level

- Press the Sound Level Button (2) to change the volume of the audio signal.

The sound level can be adjusted in 5 levels. The LED flashes blue each time Sound level button is pushed. 1 flash = lowest volume, 5 flashes = highest volume.



VoiceLink, easyTek™, and miniTek®.

easyTek™ and miniTek® enable your patient to listen to their cell phone, MP3 player, computer, TV, and other electronic devices directly through their hearing aids in true stereo, at their preferred volume without disturbing others. When paired with a streaming device the VoiceLink™ companion microphone enables them to hear their companion or a speaker clearly in a busy restaurant or small gathering as if they were standing inches away.

easyTek +
VoiceLink

- Connect to multiple audio devices

miniTek +
VoiceLink

- Enhance hearing in noisy environments

Manufactured by

Sivantos, Inc.
10 Constitution Avenue
Piscataway, NJ 08854
Phone: (800) 766-4500
Fax: (732) 562-6696

Information in this brochure is subject to change without notice. Copyright © 2016 Sivantos, Inc. All rights reserved. Sivantos, Inc. is a Trademark Licensee of Siemens AG.

The *Bluetooth*® word mark and logos are owned by the Bluetooth SIG, Inc. and any use of such marks by Sivantos, Inc. is under license. Other trademarks and trade names are those of their respective owners.

Part #SH201541 5/16 3.0 22B771 1K SI/16836-16

signiausa.com